

# Uporabno

NTF > IGT > **Uporabno**

Kaligrafija+

• minuskule

• majuskule



Črka n+

Na podlagi črke **n** je lažja izpeljava črk h, i, m, r, u ...

**skiciranje**

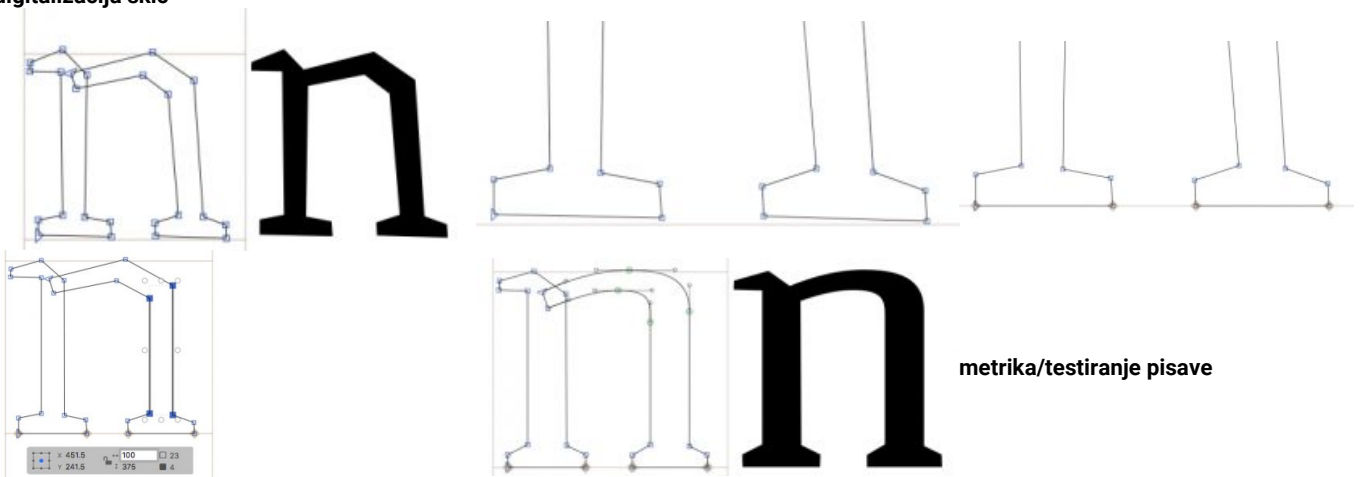
dva svinčnika

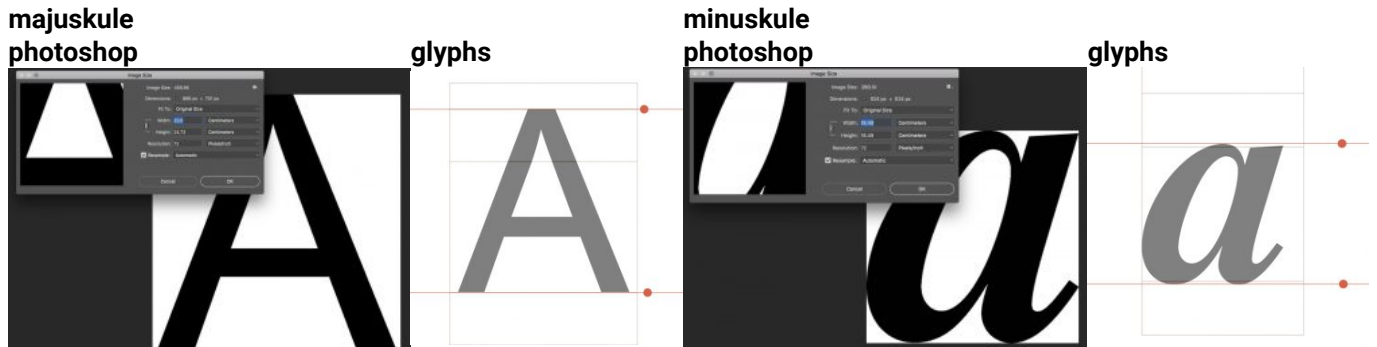
šrafiranje

dodajanje detajlov

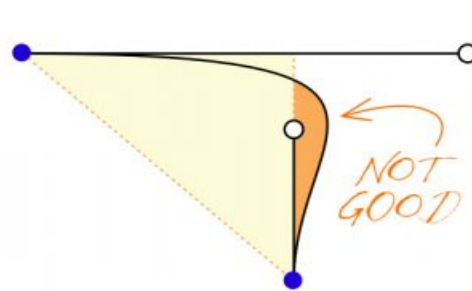
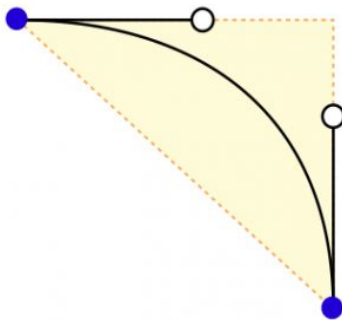


**digitalizacija skic**

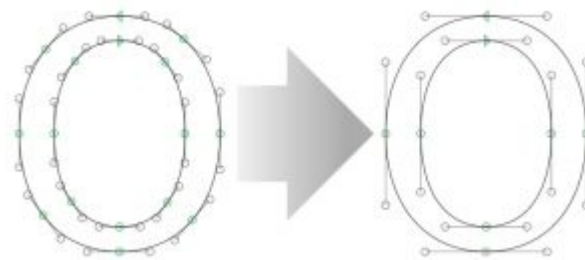
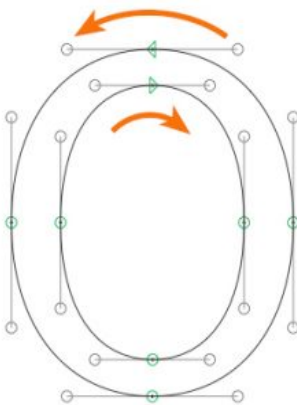




Magični trikotnik+



Orientacija in ekstremi+



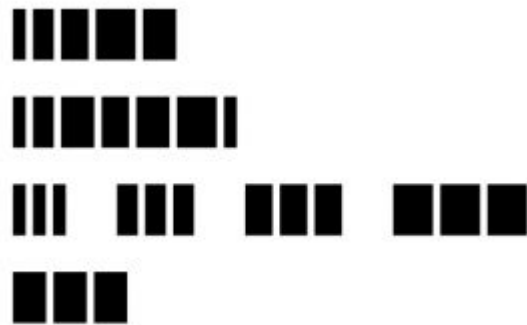
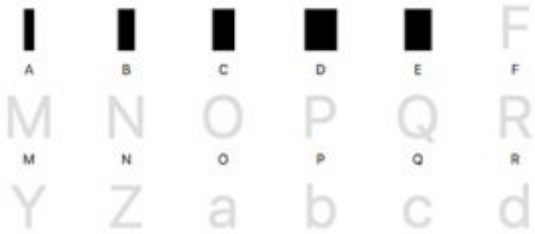
Enostavne, napredne in kompleksne oblike+

enostavne oblike

**glyphs**

**metrika**

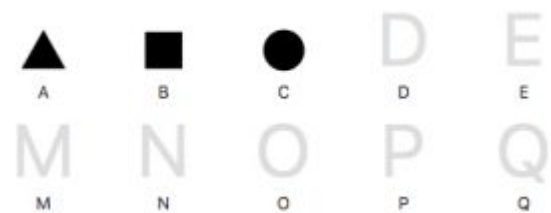
Letter, Latin



napredne oblike

glyphs

Letter, Latin

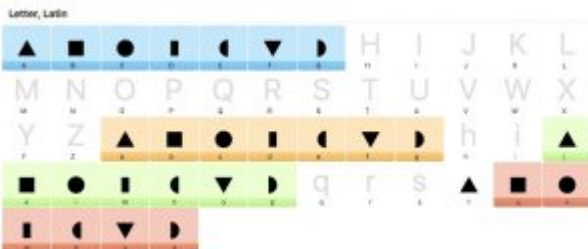


metrika



kompleksne oblike

glyphs

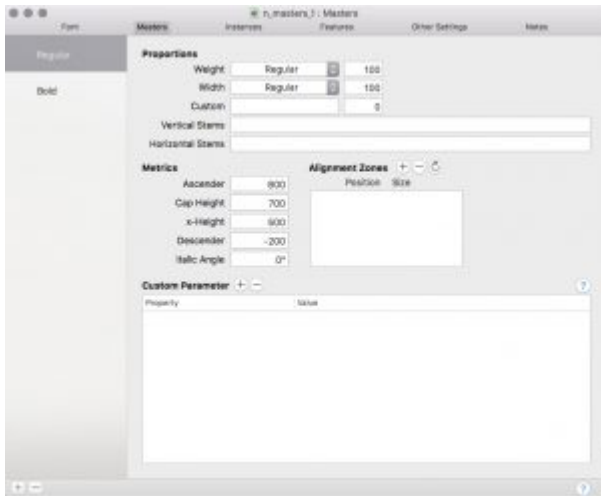


metrika



Dodajanje mastra+  
dodajanje mastra

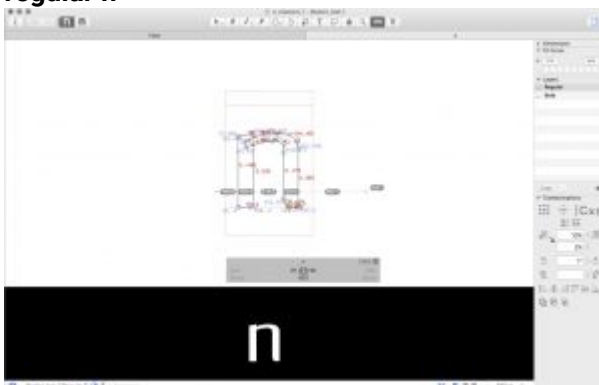
preklapljanje



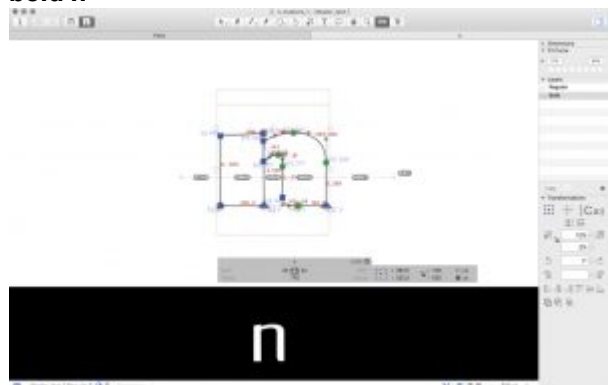
regular n in bold n



regular n

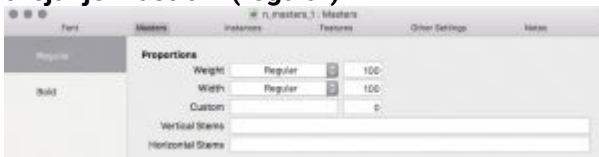


bold n

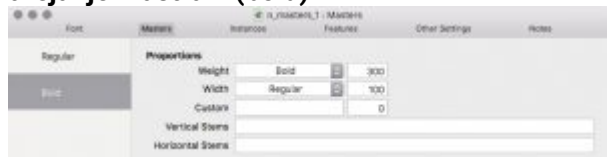




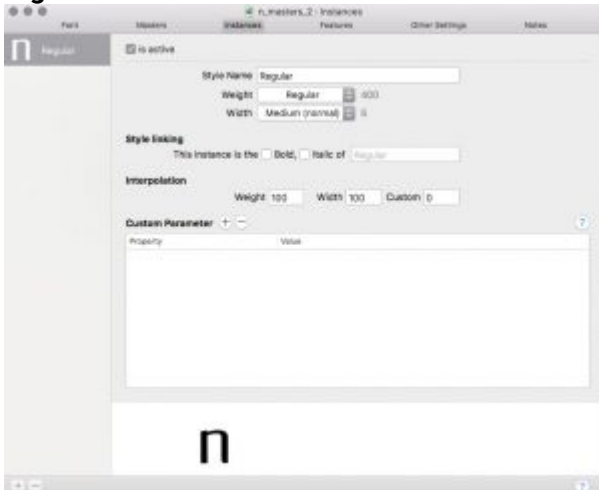
### urejanje mastra n (regular)



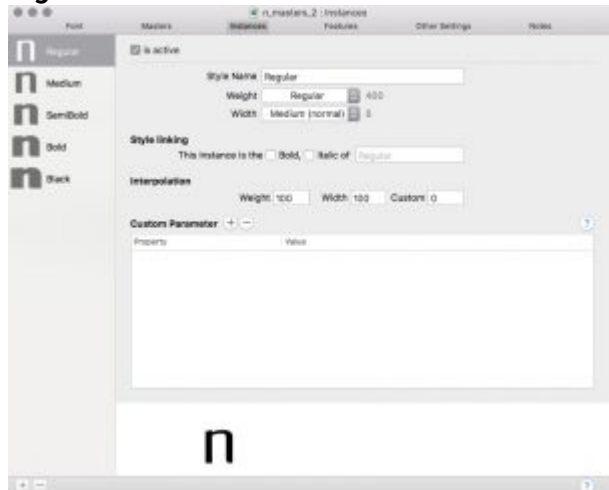
### urejanje mastra n (bold)



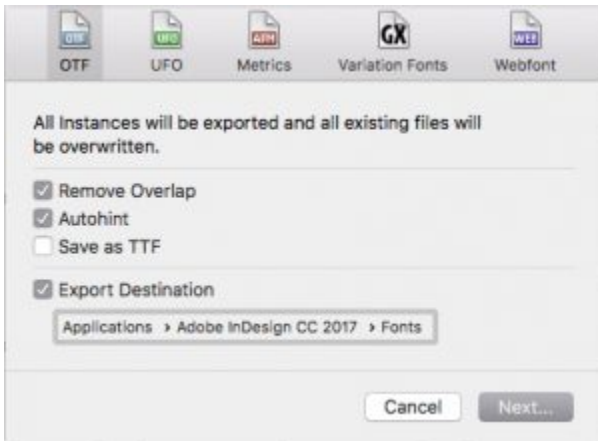
### regular



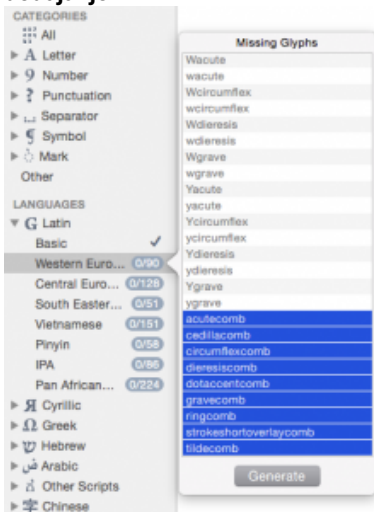
### regular-black



Preverjanje delovanja pisave+



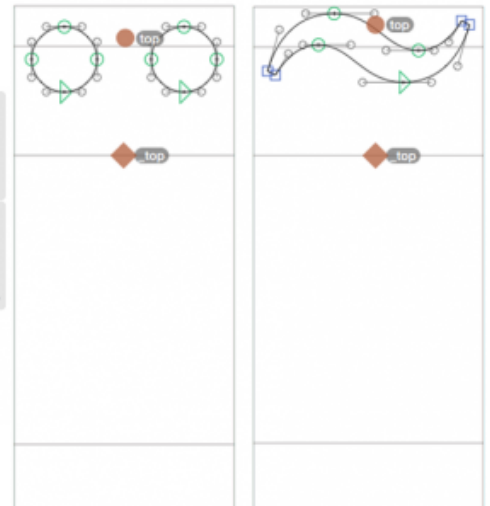
Diakritična znamenja+  
diakritična znamenja  
dodajanje



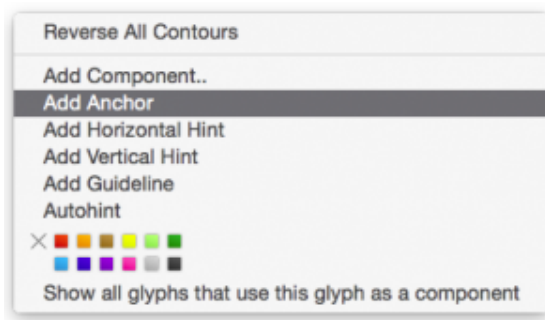
pregled



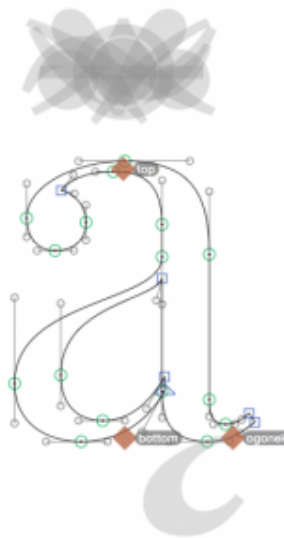
urejanje



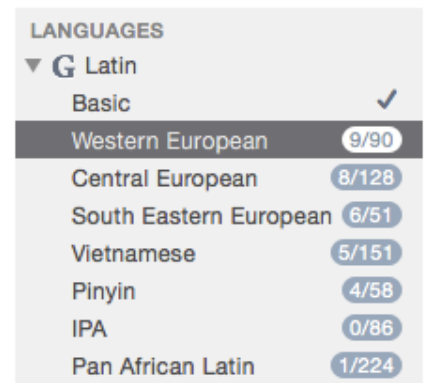
sidra



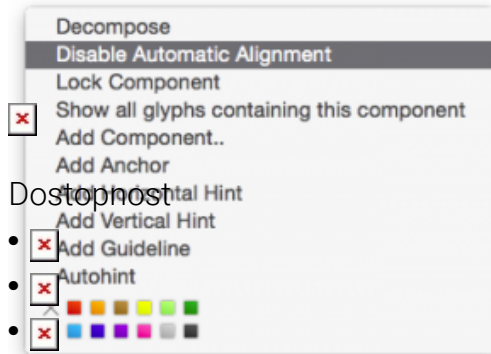
diakritični oblak



komponente

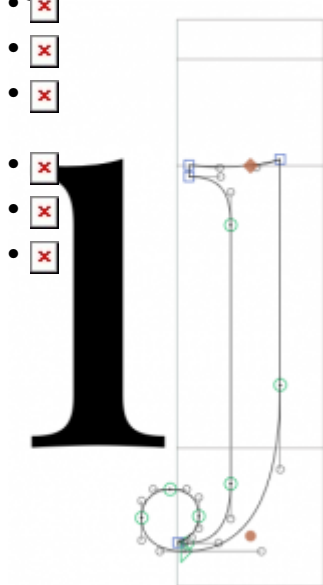


opcijsko



Dostopnost

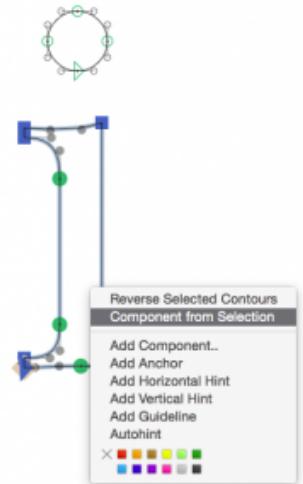
zred i



diakritična znamenja



i in j



majuskule



poravnava na višino majuskul



Glyphs & FontLab (skripte)+

- [GlyphsMini Handbook \(2017\)](#)
- [Glyphs Handbook \(2016\)](#)
- [Glyphs Handbook \(2013\)](#)
- [Glyphs Handbook \(2012\)](#)
- [Fontlab Studio 5](#)
- [FontLab \(nastavitve\)](#)



[Skip to content](#)