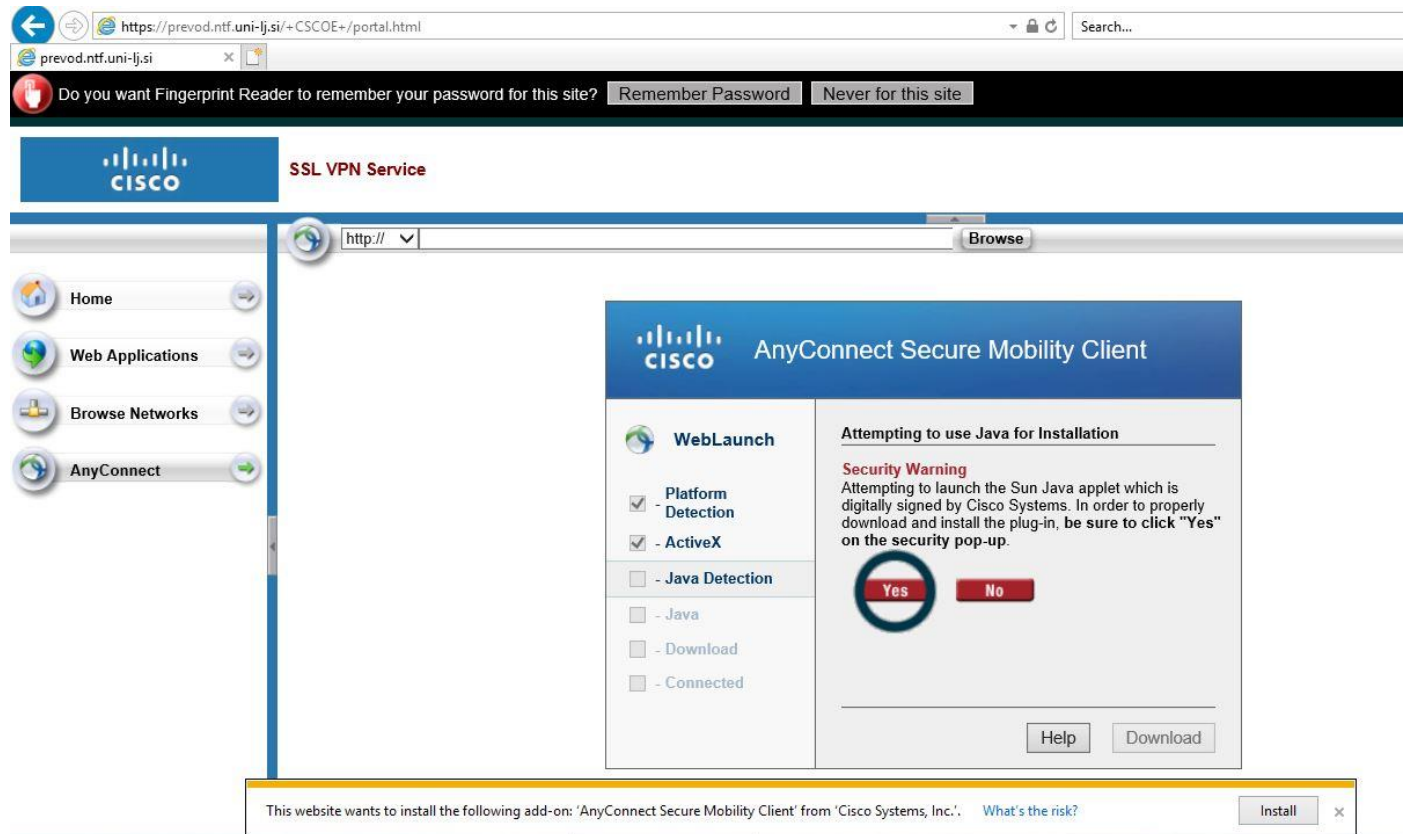


# Za dostop do omrežja NTF


Z brskalnikom **Internet explorer** obiščite stran

[prevod.ntf.uni-lj.si](https://prevod.ntf.uni-lj.si) (brez »www« !)

in sledite navodilom:



Če imate nameščeno Javo, se bo AnyConnect sam namestil. Če ne, bo ponudil Manual Installation:



# AnyConnect Secure Mobility Client

### WebLaunch

- Platform Detection
- ActiveX
- Java Detection
- Java
- Download
- Connected


### Manual Installation

Web-based installation was unsuccessful. If you wish to install the Cisco AnyConnect Secure Mobility Client, you may download an installer package.

Install module(s) below in the listed sequence. Platforms supported: Windows 7 SP1 or newer

[AnyConnect VPN](#)

Alternatively, [retry](#) the automatic installation.



# AnyConnect Secure Mobility Client

### WebLaunch

- Platform Detection
- ActiveX
- Java Detection
- Java
- Download
- Connected

### Manual Installation

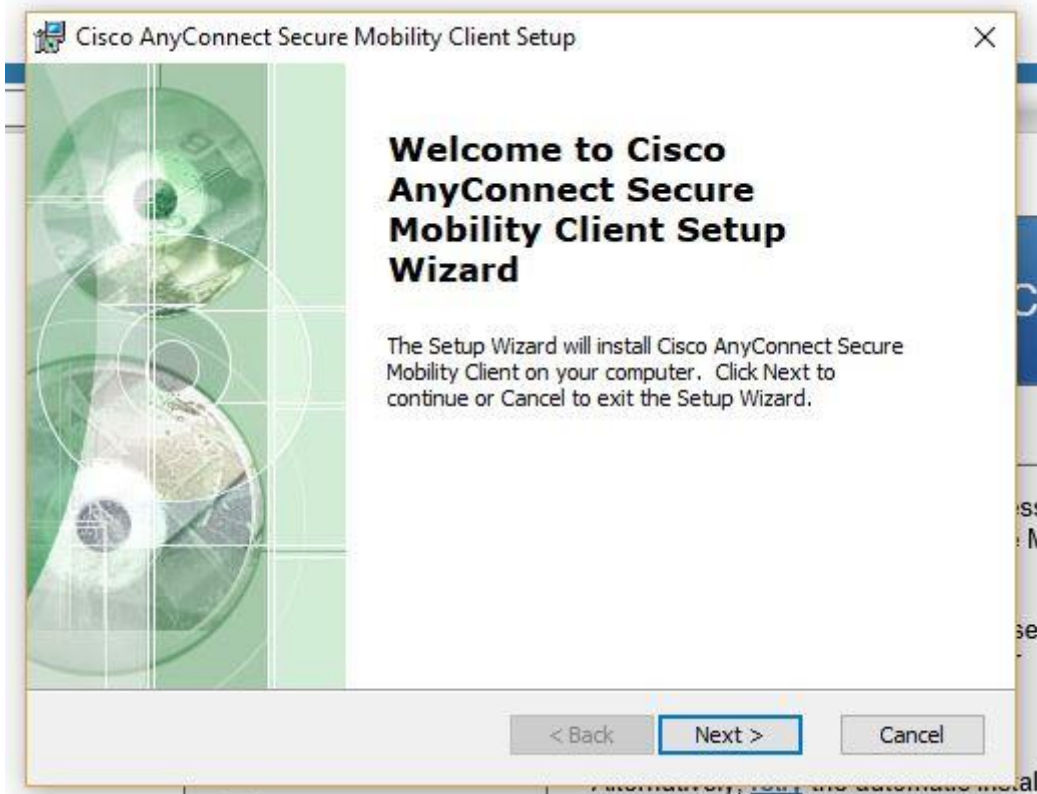
Web-based installation was unsuccessful. If you wish to install the Cisco AnyConnect Secure Mobility Client, you may download an installer package.

Install module(s) below in the listed sequence. Platforms supported: Windows 7 SP1 or newer

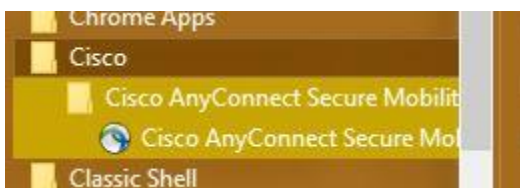
[AnyConnect VPN](#)

Alternatively, [retry](#) the automatic installation.

Do you want to run or save anyconnect-win-4.3.02039-web-deploy-k9.exe (4,67 MB) from prevod.ntf.uni-lj.si?

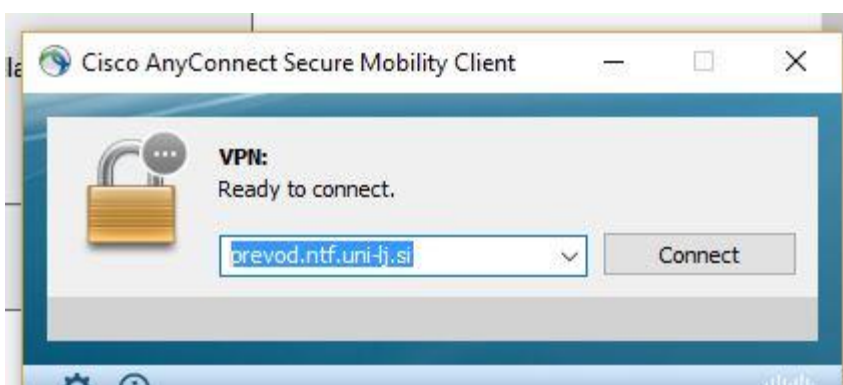


se inštalira med programe



ga zaženete

ponovno obiščete spletno stran



se prijavite s svojo identiteto v AD



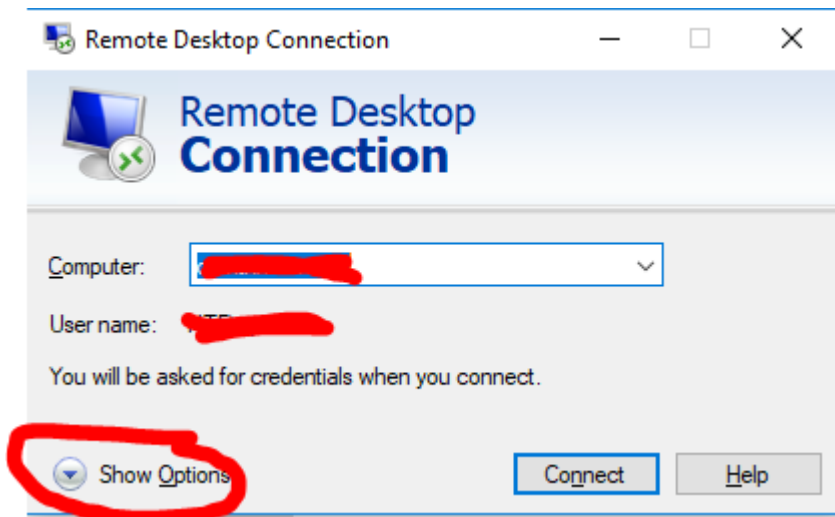
Ko vzpostavi povezavo, ste v NTF omrežju:



# Za dostop do določene naprave v omrežju NTF

uporabite Remote desktop (v iskalnik vpišete RDC)

Pozor: Remote desktop (=Oddaljeni dostop) mora biti vnaprej omogočen na tej napravi



Če želite dostopati do računalnika v omrežju, uporabite njegovo domensko ime (npr. PCOG208.ntf.uni-lj.si) ali njegov IP.

