



Erasmus+



# Welcome!



[NTF Erasmus+](#)





Univerza v Ljubljani  
Naravoslovnotehniška fakulteta

# University of Ljubljana Faculty of Natural Sciences and Engineering



**Erasmus+ faculty coordinator**

**dr. Alenka Šalej Lah**

International office  
[alenka.salej@ntf.uni-lj.si](mailto:alenka.salej@ntf.uni-lj.si)  
+38612003289  
Snežniška 5, 3rd flor, Room K-316



[NTF Erasmus+](#)





## **Geology**

Asst. Prof. Dr. Luka Gale  
luka.gale@ntf.uni-lj.si



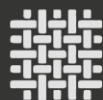
## **Geotechnology, Mining and Environment**

Assoc. Prof. Dr. Jože Kortnik  
jože.kortnik@guest.arnes.si



## **Materials and Metallurgy**

Asst. Prof. dr. Matjaž Knap  
matjaž.knap@ntf.uni-lj.si



## **Textile**

Asst. Prof. dr. Mateja Kert  
mateja.kert@ntf.uni-lj.si



## **Graphic Arts**

Asst. Prof. Dr. Nace Pušnik  
nace.pusnik@ntf.uni-lj.si



## **Textile and Fashion Design**

Prof. Marija Jenko  
marija.jenko@ntf.uni-lj.si



## NTF location- Snežniška 5

- Textile
- Graphic arts
- Textile and Fashion Design

[Location on Google Maps](#)

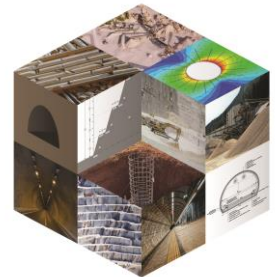
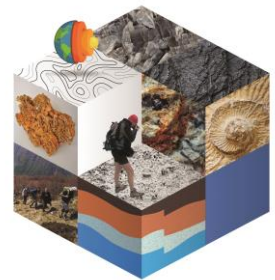
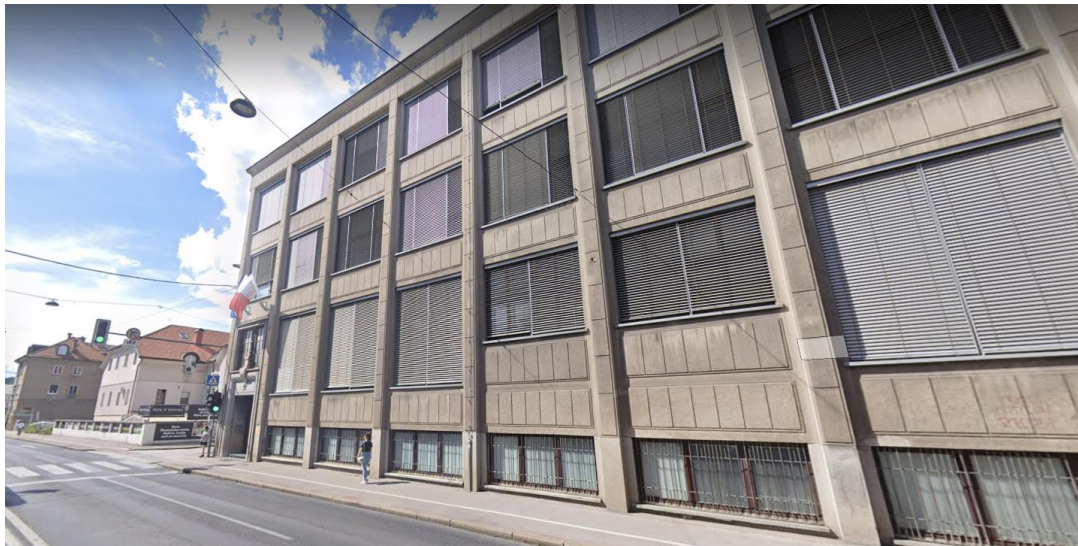




# NTF location- Aškerčeva 12

- Geology
- Geotechnology and Environmental Engineering
- Materials and Metallurgy

[Location on Google Maps](#)







# NTF location- Lepi pot 11

- Materials and Metallurgy

[Location on Google Maps](#)





## Local transportation- URBANA

It is very easy to get around the city on foot, and there is a good public transport system covering the city and all the main suburbs. The most effective means of public transport in Ljubljana is the LPP [city bus](#).

The fare is paid by the [URBANA](#) card.

You can also apply for the [student Urbana](#).

For more information klik [here](#).





# Student meals system

Being a student, you can use a [student meals system](#).

The system is used in the majority of [restaurants](#) in Ljubljana and also in other cities in Slovenia.

To be able to register you need your mobile phone for identification ([Slovenian SIM card](#)) and the [student identity card](#) issued by the University.







# What is a student Digital Identity and Student Information System- VIS?

Every student at the University of Ljubljana receives their digital identity called the UL-ID.

The standard form of an UL-ID username comprises of two letters and four digits followed by @student.uni-lj.si (e.g. ab1234@student.uni-lj.si).

You received an email with your personal UL-ID from the faculty coordinator and a [link](#) where you can activate your digital identity and update your profile. You can use your UL-ID for:

- **Student Information System- [VIS](#)**- the username grants access to [VIS](#) system, the online student administration office (application for exams, examination of grades, schedules) and represents your digital identity,
- Eduroam,
- University e-mail and other [IT services](#).

**For logging in to the VIS Student Information System [click here](#).**



# International student Welcome day

You can watch the full recorded session of Welcome day and learn all there is to know about studying at our university and living in Slovenia and Ljubljana:

[INTERNATIONAL STUDENT WELCOME DAY,](#)  
[15 SEPTEMBER 2023 AT 2 PM CEST](#)

And for more information  
you can visit UL site:  
[www.uni-lj.si/study](http://www.uni-lj.si/study)





# Temporary residence permit

The Administrative Unit in Ljubljana opened a **SPECIAL RECEPTION DESK** for accepting applications for a temporary residence permit for study purposes (first application and extension of the permit).

International students can register at the main entrance of the **Ljubljana Administrative Unit, Tobačna ulica 5, Ljubljana, waiting room F.**

A special reception desk will be open during administrative office hours from **September 18 to October 13 2023:**

*Monday - Thursday: 8.30 am until 2.30 pm*

*Friday: Friday, 8.30 until 11.30 am*

[UL website.](#)





# Winter semester dates and public holidays in Slovenia

## Winter semester is from:

- 3<sup>rd</sup> of October 2023 till 19<sup>th</sup> of January 2024

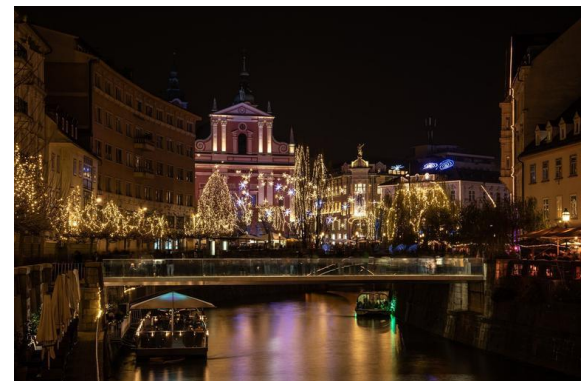
## Winter exam period is from:

- 22<sup>st</sup> of January 2024 till 16<sup>th</sup> of February 2024

For more information click [here](#).

## During the winter semester there will be no organized forms of education on holidays:

- 1<sup>st</sup> of November 2023, Day of Remembrance of the Dead
- 25<sup>th</sup> of December 2023, Christmas Day
- 26<sup>th</sup> of December 2023, Independence and Unity Day
- 1<sup>st</sup> and 2<sup>nd</sup> of January 2024, New Year's Days
- 8<sup>th</sup> of February 2024, Prešeren Day





# Where to get the after-mobility documents?

After mobility, the students have to collect this two after mobility documents:

- **Confirmation of arrival and stay** (International office)
- **Transcript of records- ToR** (Student office)

**MONT STUDENT OFFICE-** Geology, Materials and Metallurgy, Geotechnology, Mining and Environment.

Majda Štrakl

Head of Student Office

Aškerčeva 12

Phone: 01 470 46 47

E-mail: majda.strakl@ntf.uni-lj.si

**OTGO STUDENT OFFICE-** Graphic Arts, Textile and Fashion Design, Textile

Ivana Popov Jovanović

Student Office

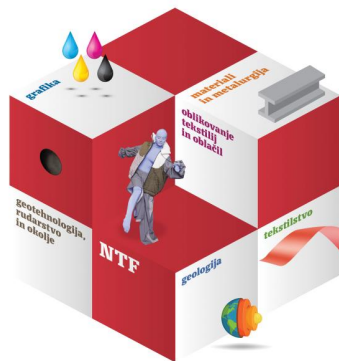
Snežniška 5

Phone: 01 200 32 10

E-mail: ivana.popovjovanovic@ntf.uni-lj.si



# Welcome to Ljubljana



Naravoslovnotehniška fakulteta



[www.facebook.com/ulntf](https://www.facebook.com/ulntf)



[www.instagram.com/ulntf](https://www.instagram.com/ulntf)



[www.ntf.uni-lj.si](http://www.ntf.uni-lj.si)      [info@ntf.uni-lj.si](mailto:info@ntf.uni-lj.si)

